

Last Revision Date 02/22/2016

2463F.00

Effective Date February 2016

DEPARTMENT: Salt Plant

AREA: Warehouse

OWNER: Salt Plant Training and Quality Supervisor

Expected Revision Date: February 2018

AUTH. Rachel Johnson

COLOR KEY

SAFETY MESSAGE

Work Inst. Quality Safety

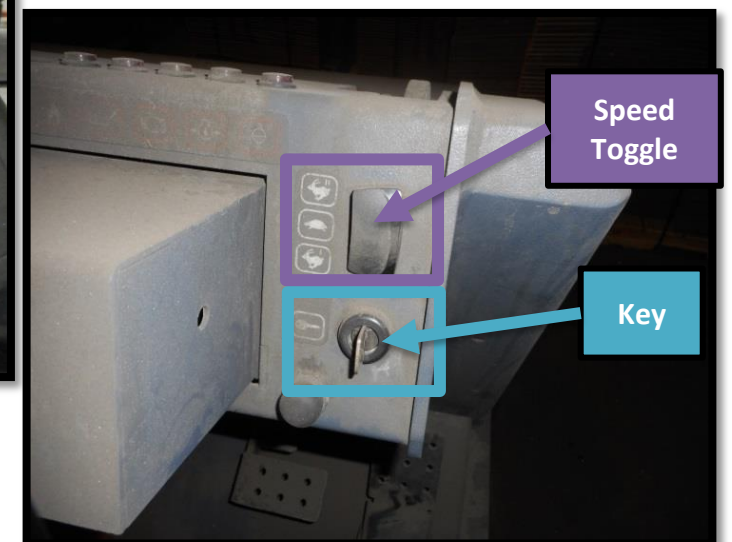
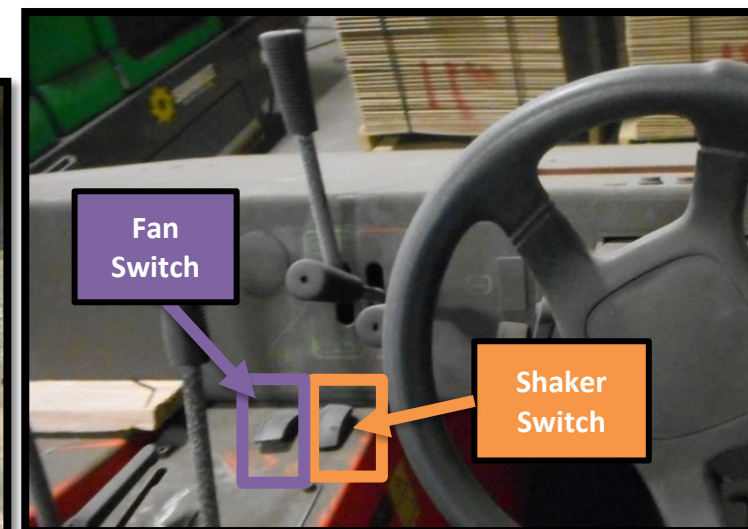
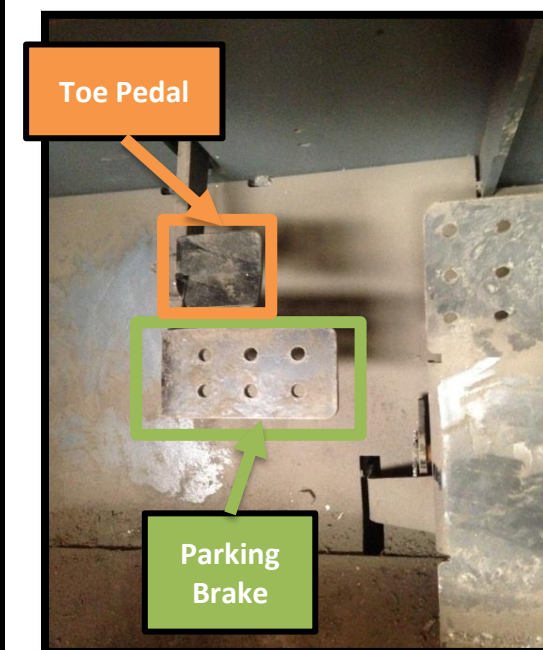
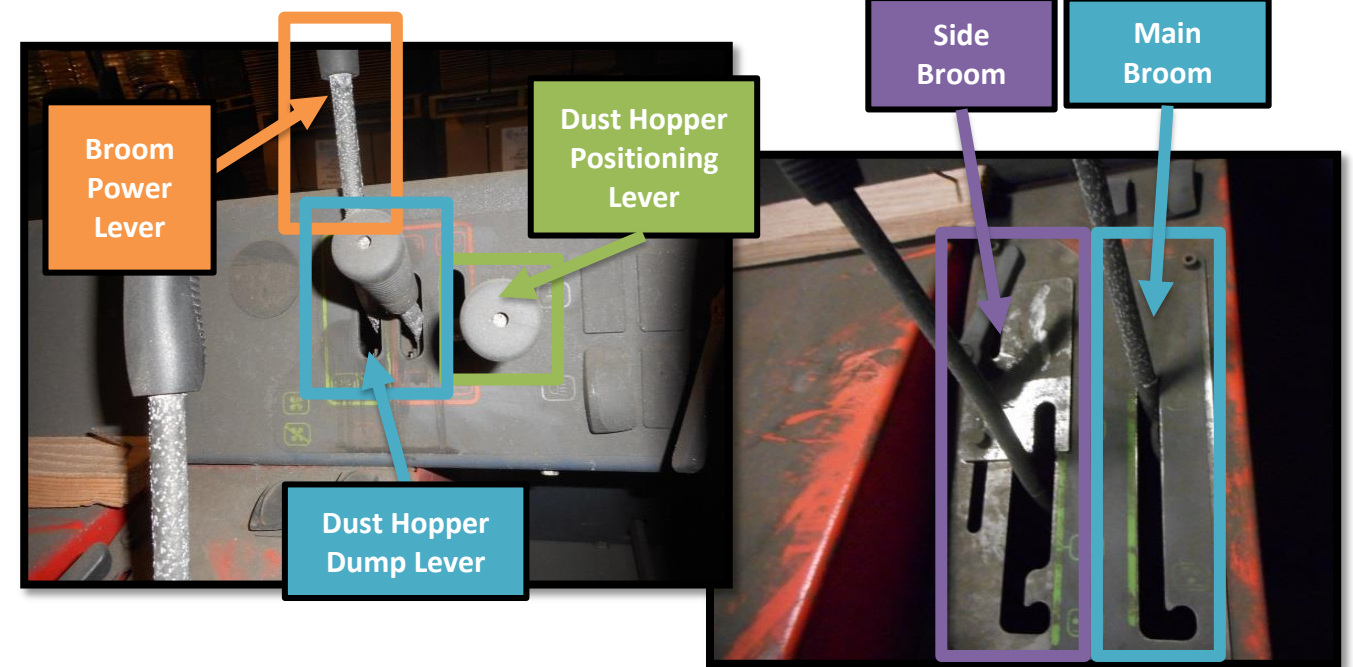
Perform the sweeper inspection before operating the sweeper.

#	SIMPLIFIED WORK STEP	KEY POINTS
Step 1	COMPLETE the Mobile Equipment Inspection Form	
Step 2	PREPARE for Sweeping	<ul style="list-style-type: none"> PICK UP large debris in the warehouse. CLEAN OUT debris from the broom.
Step 3	TURN the Sweeper On	<ul style="list-style-type: none"> TURN the sweeper key to 'On.' PRESS filter shaker switch forward. DETERMINE whether the vacuum fan should be turned on. <ul style="list-style-type: none"> PULL the fan switch back to turn it off if the floor is damp. PUSH the fan switch forward to turn it on if the floor is dry. PRESS speed toggle to the top rabbit. ENSURE the dump lever is forward.
Step 4	SWEEP the Warehouse	<ul style="list-style-type: none"> ALLOW sweeper to warm up. PUSH the main and side broom adjustment levers forward to lower the brooms. PUSH the broom power lever all the way up to turn on both brooms. DRIVE down every isle. USE caution to avoid hitting anything. If the sweeper fails to pick up dust: SEE step 5.
Step 5	EMPTY the Dust Hopper	<ul style="list-style-type: none"> PULL the broom power lever back. PULL the two broom adjustment levers back. DRIVE sweeper to the mineral dump. PUSH the hopper positioning lever forward. ENSURE the dump lever is forward. WAIT until the hopper empties. PULL the dump lever back to close the hopper. PULL hopper positioning lever back.

PICTURES



Main Broom



Sweep the warehouse every shift or more often as needed.

